



**LIGHT**

**LIGHT ELECTRONICS CO., LTD.**

---

## Electro-Optical Characteristics







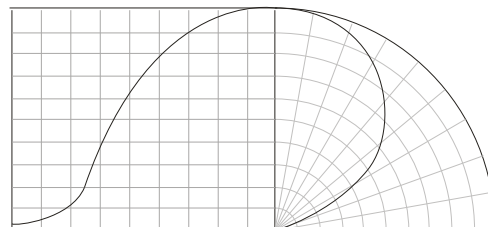
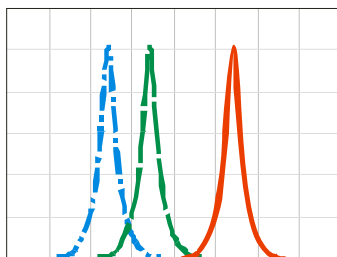
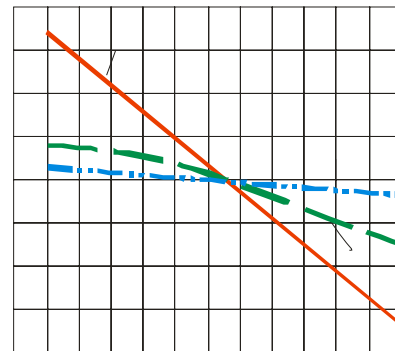
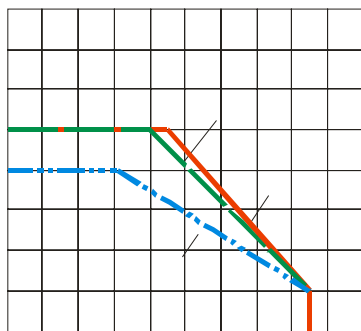
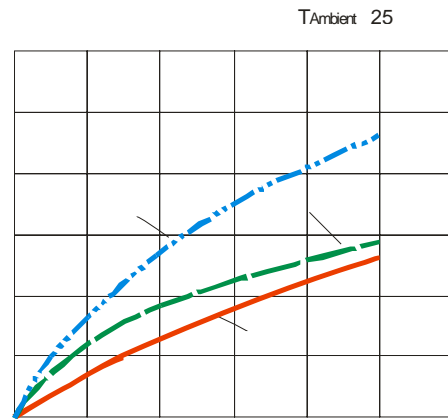
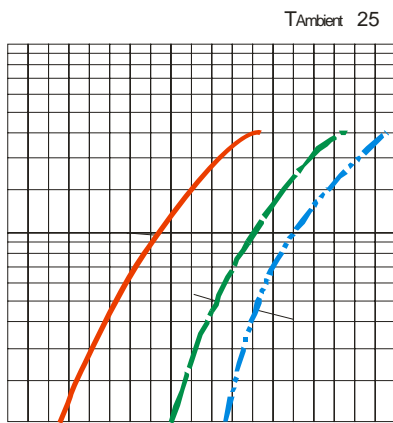
## Electro-Optical Characteristics (Temperature=25°C)

							μ
	$\lambda$						
	$\Delta\lambda$						
	$\theta$						

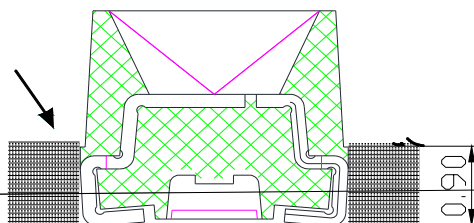
以上 厂商

manufacturer

## Typical Characteristics Curves







LIGHT

**LIGHT ELECTRONICS CO., LTD.**

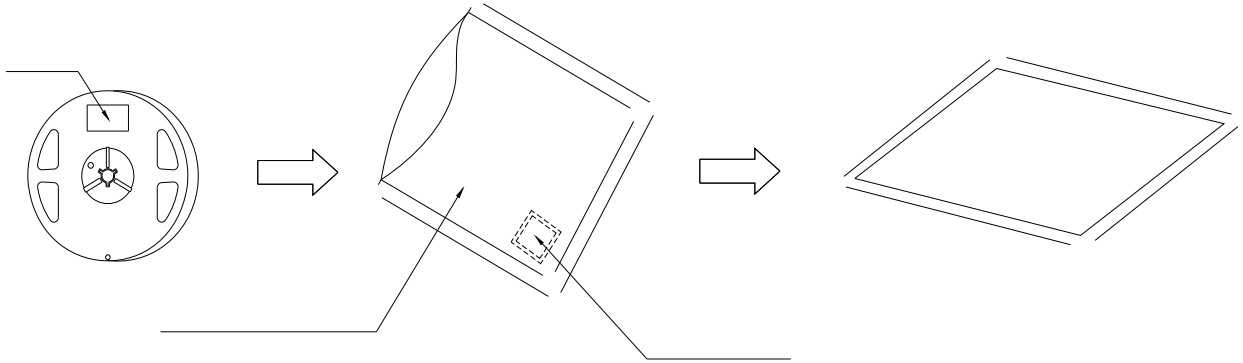
---

## 2

### Packaging( 2)



#### Moisture Proof and Anti-Electrostatic Foil Bag



#### Cardboard Box



#### Label Explanation



L

**LIGHT ELECTRONICS CO., LTD.**

---

## 2

### Guideline for Soldering (2)

3.

Cleaning

## (1)

### Precautions (1)

1.

#### Storage

- 

- 

- 

- 

- 

2.

#### Static Electricity

- 

- 

-

(2)

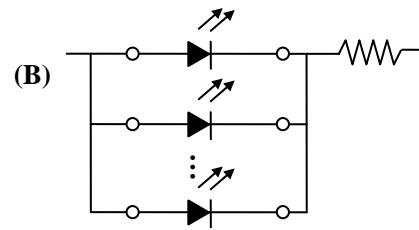
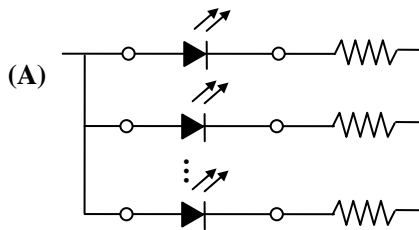
### Precautions (2)

3.

#### Design Consideration

•

•



•

4.

#### Reverse voltage protection

•

•

## (3)

### Precautions (3)

5.

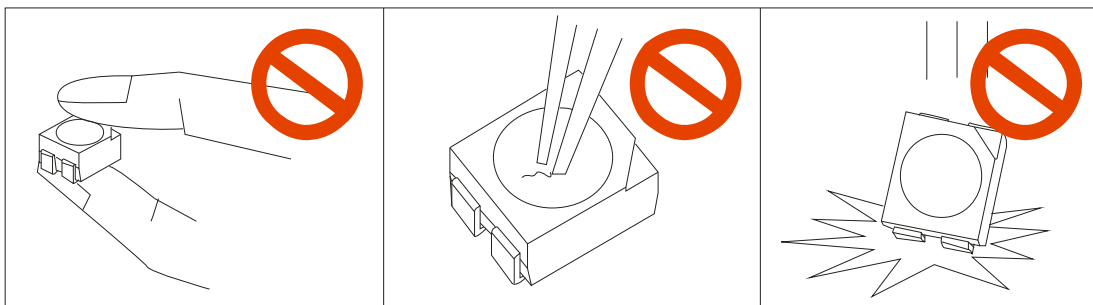
The safe temperature for LEDs working

- 

6.

Others

- 



-