

全球



FEATURES

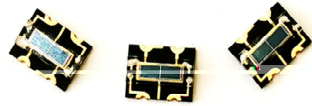
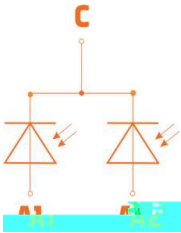
- .
- .
- .

TYPICAL APPLICATIONS

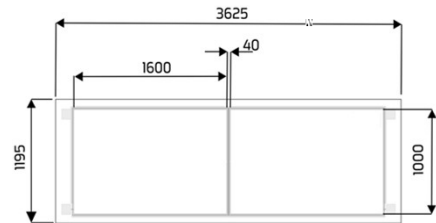
- .
- .
- .

KEY CHARACTERISTICS

Parameter	Value	Unit
	×	



DIMENSIONS



Absolute Maximum Ratings (Ta=25)

Parameter	Symbol	Min.	Max.	Unit

Electro-Optical Characteristics (Ta=25)

Symbol	Parameter	Conditions	Min.	Typ.	Max.	Unit
λ	Spectral response range	---	400	---	1100	nm
λ						
$\Delta\theta$						

Spectral Sensitivity

